

# Walker DesignBuild, Homesite 10

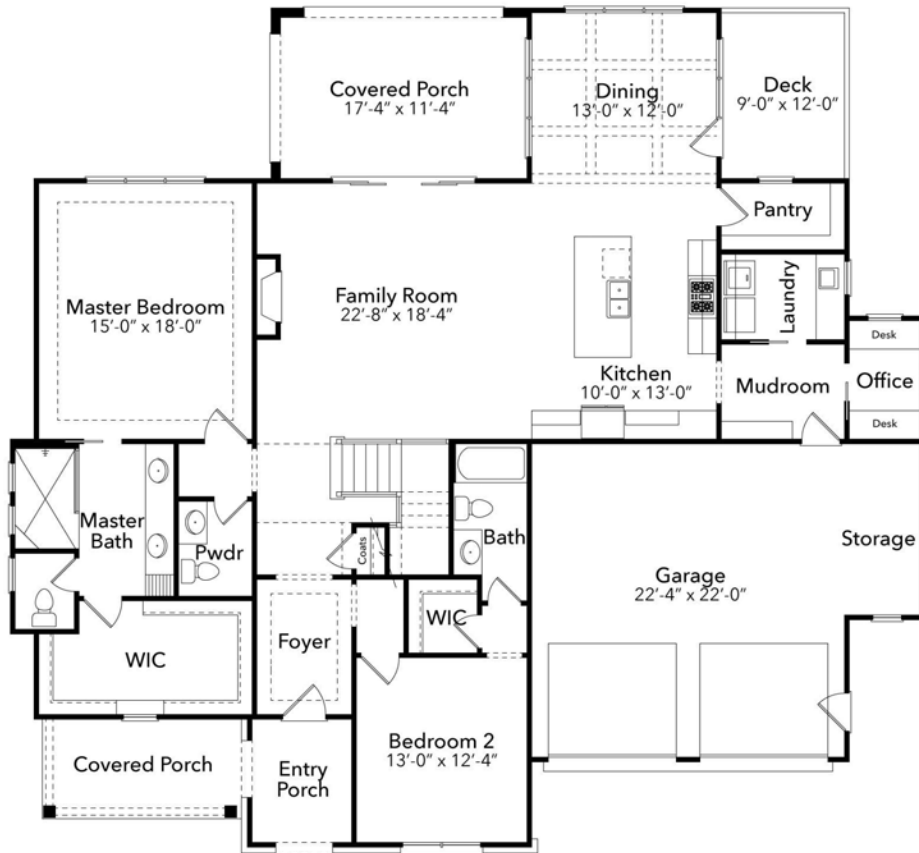
4 BR | 4.5 BA | 3,152 SF



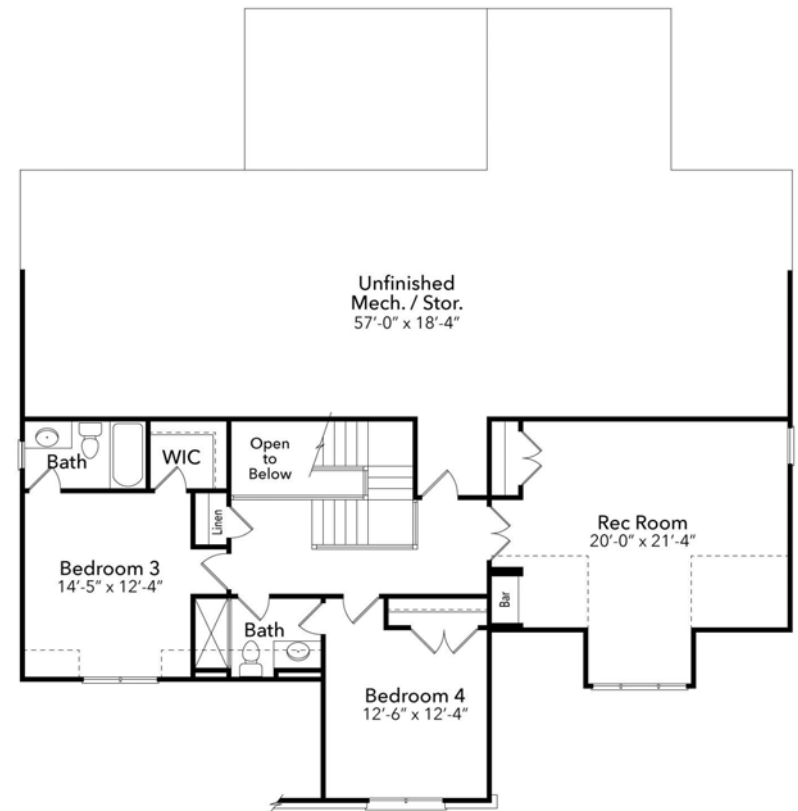
919-278-7687 | 235 COTTAGE WAY, PITTSBORO NC 27312 | [VINEYARDSATCP.COM](http://VINEYARDSATCP.COM)

Floorplans and renderings are artistic representations and subject to change without prior notice. Dimensions are approximate. Sales by Coldwell Banker Howard Perry and Walston New Homes & Land. 08/10/2020





FIRST FLOOR



SECOND FLOOR